

# Paisley

## The home of Scottish heroes

The Wallace and The Bruce—two of Scotland's greatest heroes find their personal histories intertwined with Paisley and Renfrewshire.

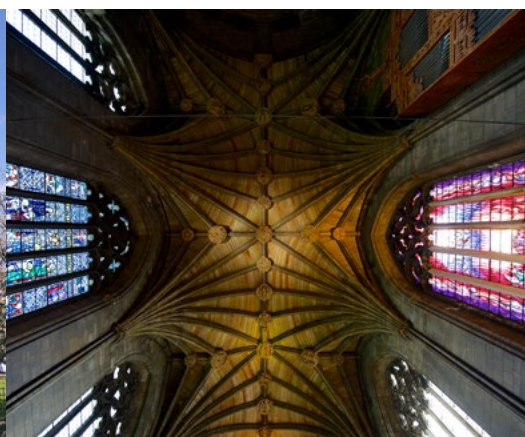
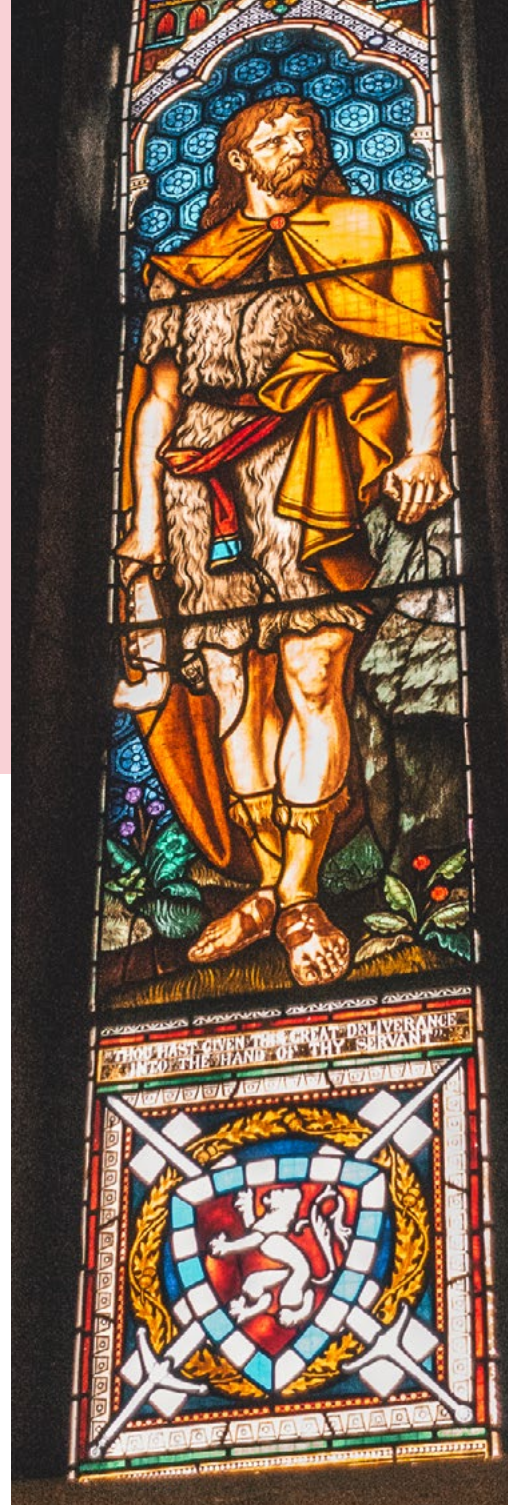
William Wallace, Scotland's Braveheart, was the son of an Elderslie knight and reputedly educated by the monks of Paisley Abbey. A monument to this hero of the medieval Wars of Independence stands in the village of Elderslie today. A series of sculpted plaques around the monument depict the key moments in Wallace's extraordinary life.

Renfrewshire's connections with the other great hero of that time, King Robert the Bruce, are more tragic.

His daughter, Princess Marjory, had been taken prisoner by the English after her father seized the vacant crown of King of Scots. Imprisoned in the Tower of London for years, the young woman was only released once her father and the Scots army had fought and won the Battle of Bannockburn.

In 1315, Marjory was married to one of Bruce's most loyal lieutenants, Walter Fitzalan, the High Steward of the King – a descendant of the Walter Fitzalan who had founded Paisley Abbey some 150 years before. Legend has it that, on 2 March 1316, the pregnant Marjory was riding home to her husband's castle in Renfrew when she fell from her horse. Her baby was delivered by caesarean section, but young Marjory died—her death as tragic as her life had been.

But the baby boy, Robert, would go on to be King Robert II of Scotland—the first of the Stewart kings and the founder of a dynasty which would rule Scotland for centuries to come.





## Wallace Birthplace Monument, Elderslie

Visit the traditional site of William Wallace's home in Elderslie and pay homage at a memorial erected to Scotland's national hero.

Famous for his battles against the tyranny of Edward Plantagenet, this monument to Wallace comprises a series of sculpted plaques around a column reminiscent of a market cross, with each plaque illustrating a key moment in his life as Knight of Elderslie and Guardian of Scotland

Wallace Birthplace Monument  
241 Main Road  
Elderslie PA5 9EN

## Paisley Abbey

Enjoy a visit to the jewel in Paisley's crown—an architectural gem with a storied history reaching back almost 900 years.

See a stunning series of stained-glass windows (including one dedicated to Sir William Wallace), learn of the fascinating relics recovered from the Great Medieval Drain—and try and spot the gargoyle inspired by Ridley Scott's Alien movie!

Mon–Sat, 10am–3.30pm.  
Guided tours Tues and Thurs at 2pm.

Free admission  
Paisley Abbey  
Abbey Close  
Paisley PA1 1JG  
+(0)141 889 7654  
info@paisleyabbey.org.uk  
www.paisleyabbey.org.uk

## Renfrew Museum

Learn about the town known as 'the cradle of the Stewarts'—a dynasty which ruled Scotland for centuries.

This fascinating 4-star VisitScotland-rated museum tells the story of the former Royal Burgh of Renfrew, from medieval times to the present day. Housed inside the stunning Disney Castle-style town hall building, it's a must-visit on your trip to Renfrewshire.

Mon–Fri, 9.30am–4.45pm  
Sat, 10am–2pm

Free admission  
Renfrew Museum  
Renfrew Cross  
Renfrew  
PA4 8PF  
+(0)300 300 1210  
ram.els@renfrewshire.gov.uk  
www.renfrewshireleisure.com

We're one of the best connected towns in Scotland. Paisley is less than 15 minutes from Glasgow by rail or road, and lies just off the M8 motorway.

With great cycle links and simple connections to our wonderful towns and villages—however you're travelling, getting here, and getting around, is easy.

[www.paisley.is](http://www.paisley.is)



# Paisley

